



SERVICE BULLETIN

Classification: AT04-010	Reference: NTB04-109	Date: September 23, 2004
-----------------------------	-------------------------	-----------------------------

2004 TITAN AND ARMADA; MIL ON WITH DTC P1774 STORED

APPLIED VEHICLE: 2004 Titan (A60)
2004 Armada (TA60)

IF YOU CONFIRM:

- DTC P1774 (LC/B SOLENOID FNCT) is stored, **and**
- The transmission fluid is not burnt,

NOTE: P1730 and/or P1731 may be stored with P1774.

ACTIONS:

Step A: Confirm this bulletin applies:

- Check the Current TCM Part Number (see page 2).
- Compare your Current TCM Part Number to Chart A on page 3.

If that part number does not match one in Chart A, this bulletin does not apply. Go back to ASIST for further diagnostic and repair information.

Step B: Reprogram the TCM (see page 3).

IMPORTANT: The purpose of "ACTIONS" (above) is to give you a quick idea of the work you will be performing. You **MUST** closely follow the entire Service Procedure (starting on page 2) as it contains information that is essential to successfully completing this repair.

Nissan Bulletins are intended for use by qualified technicians, not 'do-it-yourselfers'. Qualified technicians are properly trained individuals who have the equipment, tools, safety instruction, and know-how to do a job properly and safely. **NOTE:** If you believe that a described condition may apply to a particular vehicle, **DO NOT** assume that it does. See your Nissan dealer to determine if this applies to your vehicle.

CLAIMS INFORMATION

Submit a Primary Failed Part (PP) line claim using the following claims coding:

DESCRIPTION	PFP	OP CODE	SYM	DIA	FRT
Reprogram TCM	(1)	JE99AA	BE	32	0.6 hrs (2)

1. Reference the final CONSULT-II print out and use the indicated new TCM P/N as the PFP.
2. FRTs allow adequate time to access DTC codes and reprogram the TCM. No other diagnostic procedures subsequently required – do NOT claim any Diagnostic Op Codes with this claim.

SERVICE PROCEDURE

Step A: Confirm This Bulletin Applies.

1. With CONSULT-II “ON”, print the Transmission/Transmission Control Module Part Number as follows:

START(Nissan) >> **A/T** >> **ECU PART NUMBER** >> **COPY**

- Figure 1 is an example of the Part Number (P/N) printout.
- This is the Transmission/Transmission Control Module (TCM) Part Number (P/N).

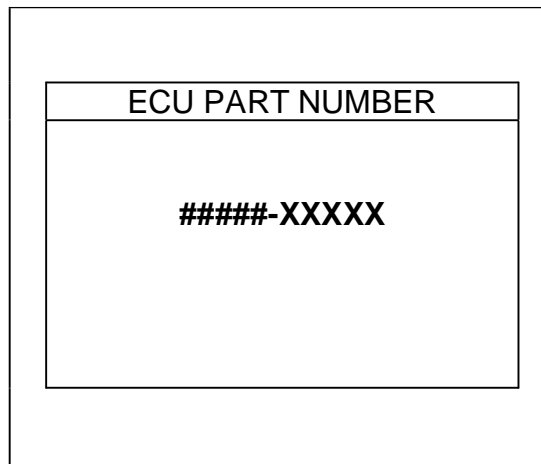


Figure 1

NOTE:

- ##### is exactly what you will see on your CONSULT-II printout. It represents the first 5 digits of the P/N, which is 31020 for all Titan and Armada vehicles.
 - XXXXX is the last 5 digits of the part number. This number may be different, depending on your vehicle’s “configuration” (engine/transmission combination, etc).
2. Attach this printout to the Repair Order.
 - You’ll use the TCM P/N to see if this bulletin applies.

3. Check the TCM P/N on the printout from step 1 (Figure 1):

- Compare your vehicle's TCM P/N to those shown under Current TCM P/N in Chart A below:

Chart A

Vehicle	Vehicle Configuration	Current TCM Part Number
Titan (A60)	2WD w/Floor Shift	31020-8S502
	2WD w/Floor Shift & TOW PKG	31020-8S702
	2WD w/Column Shift	31020-7S204
	2WD w/Column Shift & TOW PKG	31020-8S104
	4WD w/Floor Shift	31020-7S305
	4WD w/Floor Shift & TOW PKG	31020-8S205
	4WD w/Column Shift.	31020-8S005
	4WD w/Column Shift & TOW PKG	31020-8S605
Armada (TA60)	2WD w/Floor Shift	31020-7S004
	2WD w/Floor Shift & TOW PKG	31020-7S504
	4WD w/Floor Shift	31020-7S104
	4WD w/Floor Shift & TOW PKG	31020-7S604

A. If your vehicle's TCM P/N **matches** a Current TCM P/N in the chart above:

- This bulletin applies, perform TCM reprogramming.

B. If your vehicle's TCM P/N **does not match** a P/N in the chart above:

- This bulletin **does not apply**. Go back to ASIST for further diagnostic and repair information.

Step B: REPROGRAM THE TCM

Vehicle TCM Reprogramming Overview

- There are four basic steps:
 1. Download (transfer) reprogramming data from ASIST into CONSULT-II.
 2. "Preparation" steps before reprogramming TCM.
 3. Reprogram the TCM.
 4. "Wrap-up" after reprogramming is finished.

Step One: Download (Transfer) Reprogramming Data From ASIST Into CONSULT-II

- If you're not familiar with the latest TCM reprogramming procedures, click here.
This will link you to the "TCM Reprogramming For Nissan Vehicles" general procedure, or refer to it in the print copy of this bulletin.
- For those familiar with TCM Reprogramming, please review the following steps and use them as a Quick Reference for TCM reprogramming.

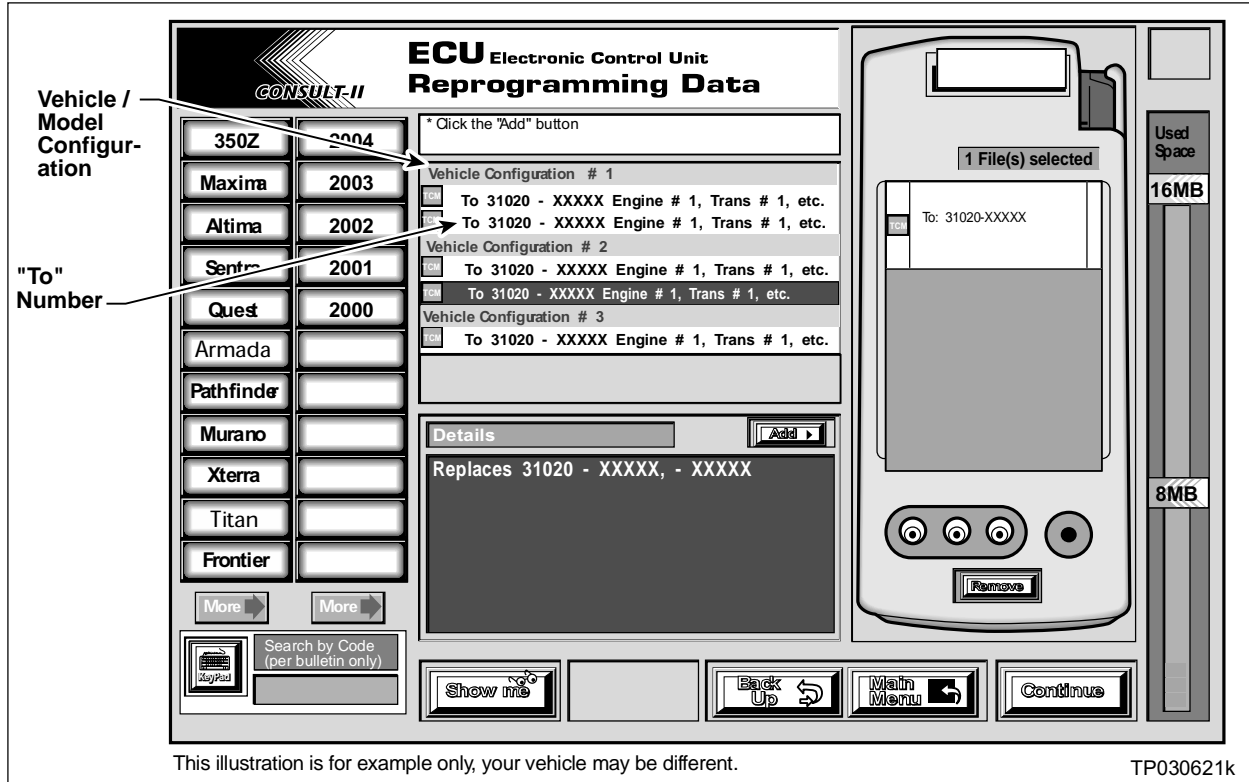


Figure A

1. Select vehicle model and model year (Example: Titan, 2004).
2. Select the correct reprogramming data:
 - a. Locate the specific "Model Configuration" (Example: 2WD w/Floor Shift & TOW).
NOTE: Model Configuration may include items such as engine type, transmission type, and vehicle options such as ASCD, TCS, ABS etc.
 - b. Select (click on) the "To" number.
NOTE: The "To" number will read: 31020-XXXXX.
3. Click on the "Add" button.
 - This will add the data you selected to the "File(s) Selected" list.
4. Write the "To" number on the Repair Order.
5. Click on "Continue" and follow directions to perform "data transfer" (download) from ASIST into CONSULT-II.

Step Two: Preparation Steps Before Reprogramming TCM

1. Connect a battery charger to the vehicle's battery.
 - Set the charger to a low charge rate (trickle charge).

CAUTION: For number 2 below and number 3 on the next page, **DO NOT** connect the CONSULT-II A/C Power Supply.

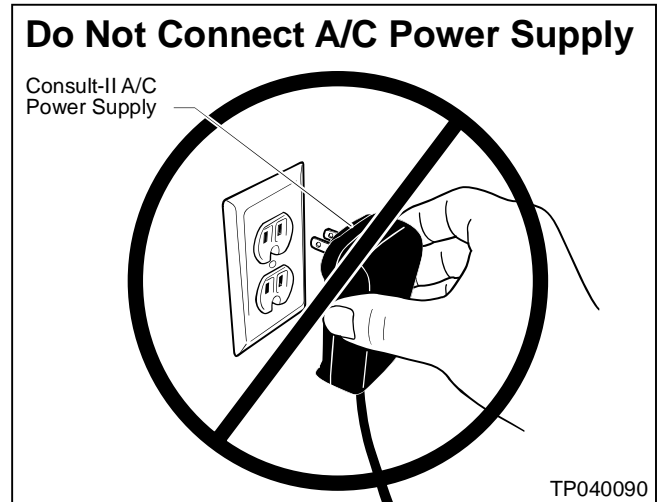


Figure B

2. Press **SUB MODE** (see Figure C) then:

- a. From the listed items, find and select **BATTERY CHARGE**.

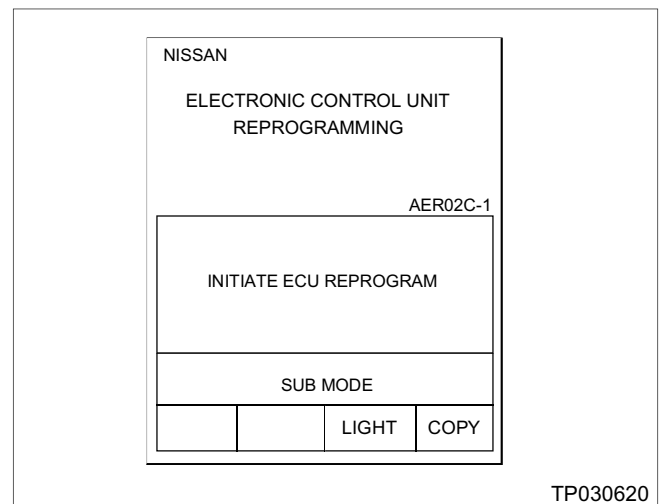


Figure C

3. Check the CONSULT-II's "Charger Input" reading (see Figure D).

NOTE:

- "Battery Voltage" is the voltage level of CONSULT-II's battery.
- "Charger Input" is the voltage level of the vehicle's battery. **(It must be above 12 volts.)**

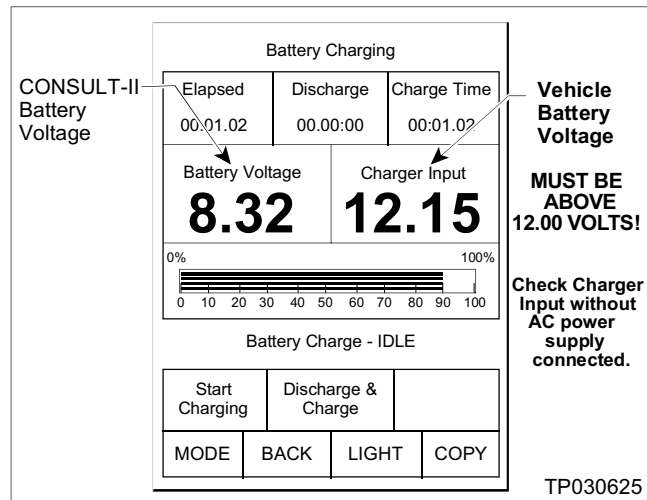


Figure D

CAUTION: If the "Charger Input" is below 12 volts:

- A list of items to check when "Charger Input" voltage is below 12V is contained in the "TCM Reprogramming For Nissan Vehicles" general procedure. Click here to link to it.
- The "TCM Reprogramming For Nissan Vehicles" general procedure can also be found in the print copy of this bulletin.

Step Three: Reprogram the TCM

- If you are not familiar with TCM Reprogramming, click here:
- This will link you back to a general procedure called "TCM Reprogramming For Nissan Vehicles."
- Or refer to it in the print copy of this bulletin.

Step Four: TCM Reprogramming “Wrap-up”

1. Turn the ignition and CONSULT-II OFF.
2. Disconnect CONSULT-II from the vehicle.
3. Start the Engine and make sure the MIL is OFF.
 - If it's still ON, use CONSULT-II with the Diagnostic (red/white) Card to erase any DTC's that may have stored in the TCM and/or the ECM during the reprogramming procedure.
4. Test-drive the vehicle and make sure the transmission operates correctly in all modes.
 - See the AT section of the appropriate Service Manual for operation specifications.

