



SERVICE BULLETIN

| | | |
|------------------------------|--------------------------|-------------------------|
| Classification: EC04-016a | Reference: NTB04-056a | Date: August 3, 2004 |
|------------------------------|--------------------------|-------------------------|

2004 TITAN & ARMADA; MIL "ON" WITH DTC P1278, P1279, P1288, P1289 A/F SENSOR

This bulletin NTB04-056 has been amended. Additional DTC codes have been added. Please discard previous versions of this bulletin.

APPLIED VEHICLES: 2004 Titan (A60)
2004 Armada (TA60)

IF YOU CONFIRM:

A MIL "ON" with any of the following DTC(s) stored:

- P1278
- P1279
- P1288
- P1289

ACTIONS:

Step A: Confirm this bulletin applies:

- Check the Current ECM Part Number (see page 2).
- Compare your Current ECM Part Number to Chart A on page 3.

If that part number does not match one in Chart A, this bulletin does not apply. Go back to ASIST for further diagnostic and repair information.

Step B: Reprogram the ECM (see page 3).

IMPORTANT: The purpose of "ACTIONS" (above) is to give you a quick idea of the work you will be performing. You **MUST** closely follow the entire Service Procedure (starting on page 2) as it contains information that is essential to successfully completing this repair.

Nissan Bulletins are intended for use by qualified technicians, not 'do-it-yourselfers'. Qualified technicians are properly trained individuals who have the equipment, tools, safety instruction, and know-how to do a job properly and safely. NOTE: If you believe that a described condition may apply to a particular vehicle, DO NOT assume that it does. See your Nissan dealer to determine if this applies to your vehicle.

CLAIMS INFORMATION

Submit a Primary Failed Part (PP) line claim using the following claims coding:

| DESCRIPTION | PFP | OP CODE | SYM | DIA | FRT |
|-----------------------|-----|---------------|-----|-----|----------------|
| Reprogram ECM per TSB | (1) | DE98AA (2) | HD | 32 | 0.6 hrs (2) |

(1) Reference the final CONSULT-II print out and use the indicated new ECM P/N as the PFP.

(2) FRT allows adequate time to access DTC codes and reprogram the ECM. No other diagnostic procedures subsequently required – do NOT claim any Diagnostic Op Codes with this claim.

SERVICE PROCEDURE

Step A: Confirm This Bulletin Applies

1. With CONSULT-II “ON”, print the Freeze Frame data as follows:

START(Nissan) >> **ENGINE** >> **Self-DIAG Results** >> **F.F. Data** >> **PRINT**

2. Attach this printout to the Repair Order.

- Figure 1 is an example of the F.F. Data printout.
- The Freeze Frame data that you’ve printed contains the ECM Part Number (P/N).
- The ECM part number will be used to see if this bulletin applies or not.

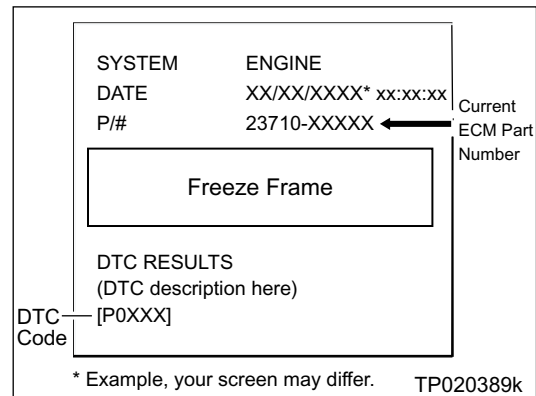


Figure 1

3. Check the ECM Part Number on the printout from Step 1 (Figure 1);
 - Compare your vehicle's ECM P/N to those shown under **Current ECM P/N** in **Chart A**, below:
 - If it's in that column, this bulletin applies.

Chart A

| VEHICLE | VEHICLE/MODEL CONFIGURATION | Current ECM P/N |
|---------|-----------------------------|---------------------|
| Titan | 2WD | 23710-7S800, -7S801 |
| | 2WD, Towing Pkg | 23710-7S815, -7S816 |
| | 2WD, Towing Pkg, VDC | 23710-7S810, -7S811 |
| | 4WD, VDC | 23710-7S065, 7S066 |
| | 4WD, Towing Pkg, VDC | 23710-7S075, -7S076 |
| Armada | 2WD | 23710-7S005, -7S006 |
| | 2WD, Towing Pkg | 23710-7S015, -7S016 |
| | 4WD, VDC | 23710-7S860, -7S861 |
| | 4WD, Towing Pkg, VDC | 23710-7S870, 7S871 |

- A. If your vehicle's ECM P/N **matches** a P/N in the chart above:
 - Perform ECM Reprogramming.
- B. If your vehicle's ECM P/N **does not match** a P/N in the chart above:
 - **This bulletin does not apply.** Refer to ASIST for further diagnostic and repair information.

Step B: REPROGRAM THE ECM

Vehicle ECM Reprogramming Overview

- There are four basic steps.
1. Download (transfer) reprogramming data from ASIST into CONSULT-II.
 2. "Preparation" steps before reprogramming ECM.
 3. Reprogram the ECM.
 4. "Wrap-up" after reprogramming is finished.

NOTE:

- If you're **not** familiar with the latest ECM reprogramming procedures, click [here](#).
 This will link you to the "ECM Reprogramming For Nissan Vehicles" general procedure, or
 Refer to Attachment A in the print copy of this bulletin.
- For those familiar with ECM Reprogramming, please review the following steps and use them as a Quick Reference for ECM reprogramming.

Step One: Download (Transfer) Reprogramming Data From ASIST Into CONSULT-II

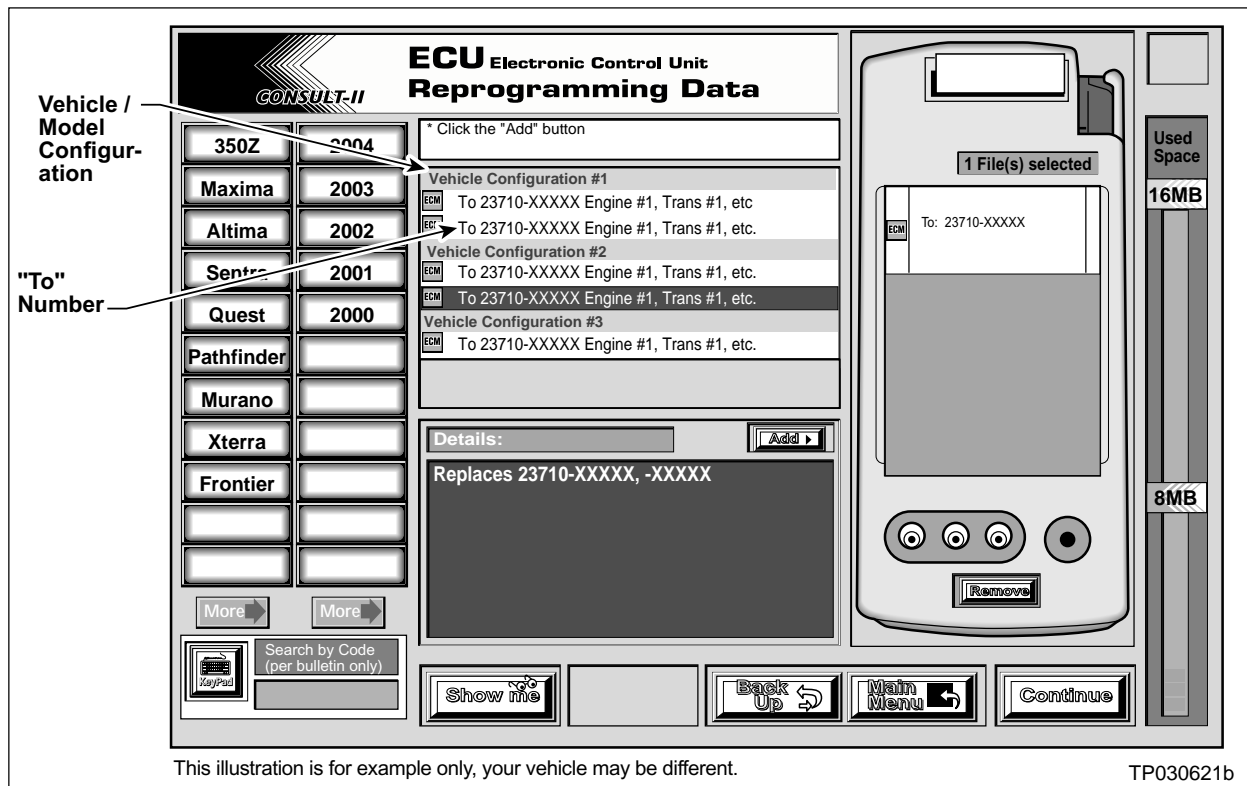


Figure A

1. Select vehicle model and model year (Example: Titan, 2004).
2. Select the correct reprogramming data:
 - a. Locate the specific "Model Configuration" (Example: VK56, A/T, 2WD).

NOTE: Model Configuration may include items such as engine type, transmission type, and vehicle options such as ASCD, TCS, ABS etc.
 - b. Select (click on) the "To" number.

NOTE: The "To" number will read: 23710-XXXXX.
3. Click on the "Add" button.
 - This will add the data you selected to the "File(s) Selected" list.
4. Write the "To" number on the Repair Order.
5. Click on "Continue" and follow directions to perform "data transfer" (download) from ASIST into CONSULT-II.

Step Two: Preparation Steps Before Reprogramming ECM

1. Connect a battery charger to the vehicle's battery.
 - Set the charger to a low charge rate (trickle charge).

CAUTION: For number 2 below and number 3 on the next page, **DO NOT** connect the **CONSULT-II A/C Power Supply**.

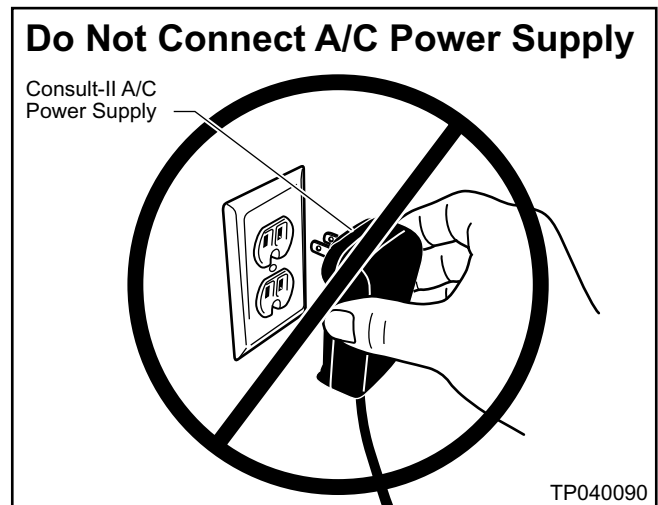


Figure B

2. Press **SUB MODE** (see Figure C) then:

- a. From the listed items, find and select **BATTERY CHARGE**.

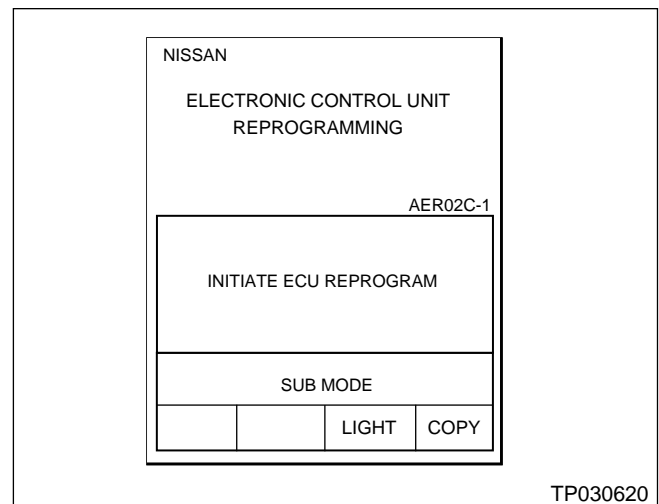


Figure C

3. Check the CONSULT-II's "Charger Input" reading (see Figure D).

NOTE:

- "Battery Voltage" is the voltage level of CONSULT-II's battery.
- "Charger Input" is the voltage level of the vehicle's battery. **(It must be above 12 volts.)**

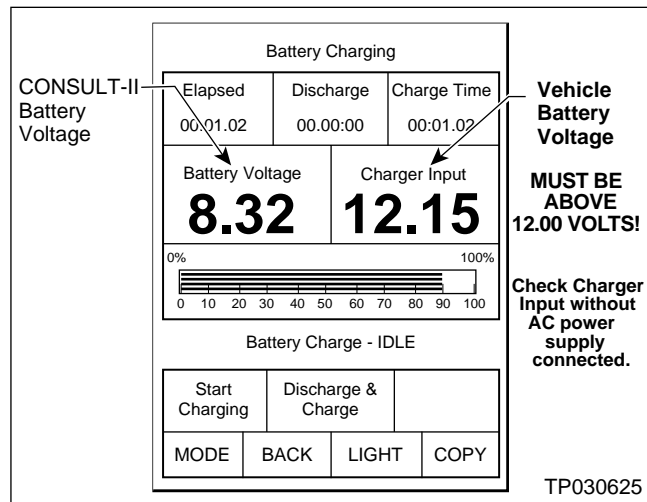


Figure D

CAUTION: If the "Charger Input" is below 12 volts:

- A list of items to check when "Charger Input" voltage is below 12V is contained in the "ECM Reprogramming For Nissan Vehicles" general procedure. Click [here](#) to link to it.
- The "ECM Reprogramming For Nissan Vehicles" general procedure can also be found in Attachment A in the print copy of this bulletin.

Step Three: Reprogram the ECM

- If you are not familiar with **ECM** Reprogramming, click [here](#):
- This will link you back to a general procedure called "ECM Reprogramming For Nissan Vehicles."
- Or refer to Attachment A in the print copy of this bulletin.

Step Four: “Wrap-up” After Reprogramming is Finished

1. Turn the ignition switch "OFF" and CONSULT-II “OFF”.
2. Wait more than 10 seconds, then;
 - a. Turn the ignition switch "ON" for 2 second, then
 - b. Turn the ignition switch "OFF" again for 10 seconds (see Figure E).
 - This will reset ECM “self learned” Data.

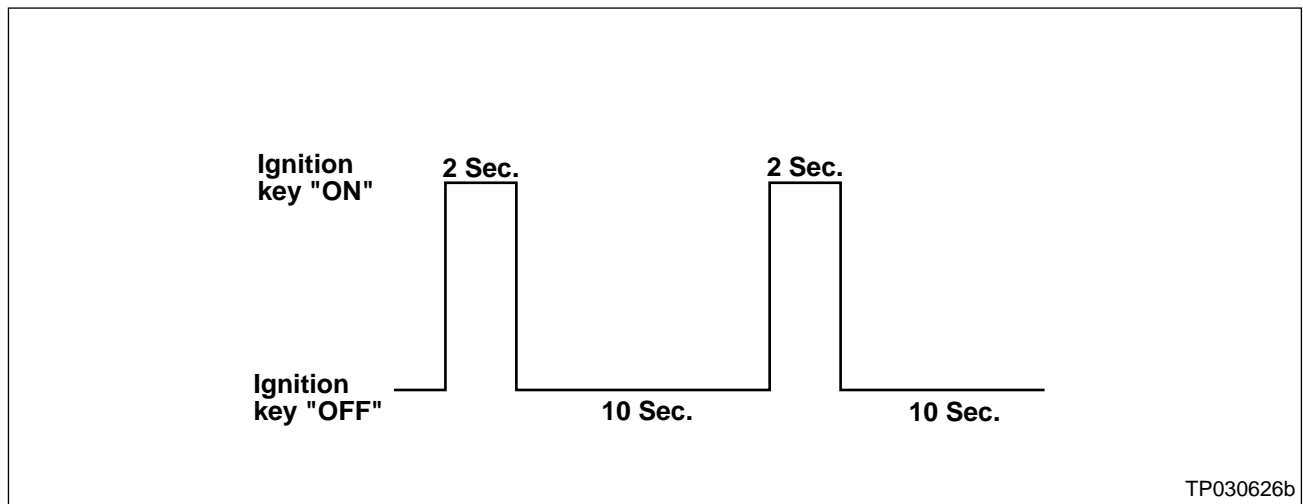


Figure E

3. Start the engine and check the idle speed.
 - If idle speed is too low, perform Idle Air Volume Learning (IAVL). See the appropriate Service Manual (ESM) for this procedure.

NOTE: If the engine will not idle, hold the engine RPM at about 2000, then slowly bring it down to an idle. IAVL can now be performed.
4. Confirm the engine is operating normally.
5. Make sure the MIL is OFF.
 - If the MIL comes ON, use CONSULT-II with the Diagnostic (red/white) Card to erase any DTC's that may have stored during the reprogramming procedure.